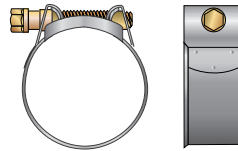
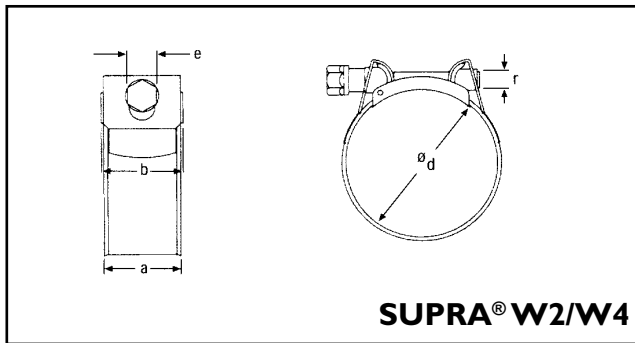


# Mikalor<sup>®</sup> hose clamps



## W2

**Screw:** Property class 8.8, zincplated.

**Band & Housing :** Stainless steel X6Cr 17 (DIN 1.4016) (AISI-430).

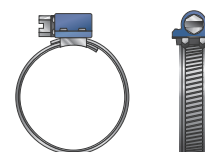
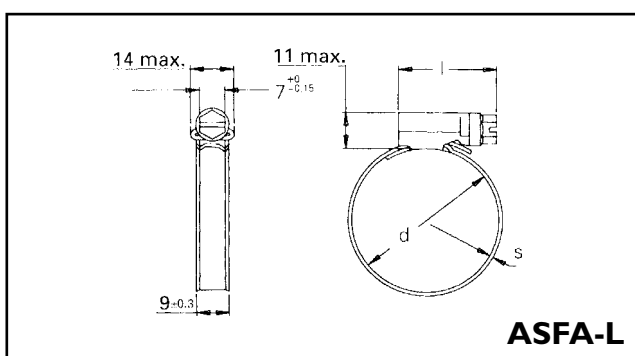
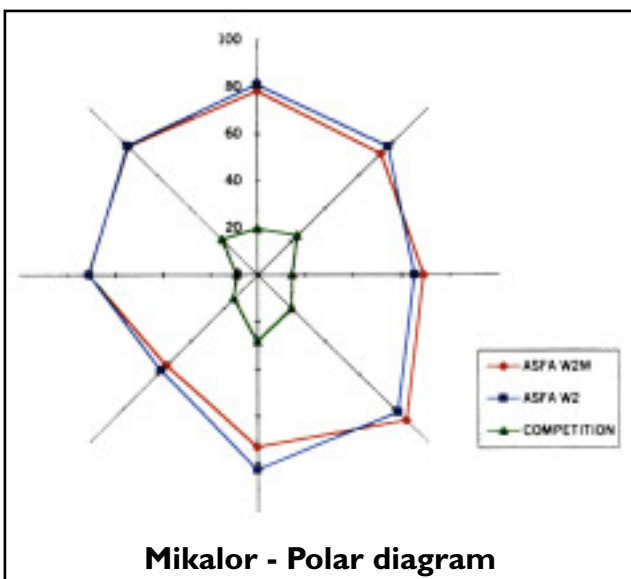
**Other components:** Steel 1.0333, zincplated.

## W4

All stainless steel.

X5CrNi 1810 (DIN 1.4301) (AISI-304).

Thanks to a great flexibility for a perfect grip throughout the contact surface and ensure a fully leakproof system.



## W2

**Screw:** Steel Qst 34.3 (DIN 1.0213) zincplated.

**Band and housing:** Stainless steel X6 Cr 17 (DIN 1.4016) (AISI-430).

## W4

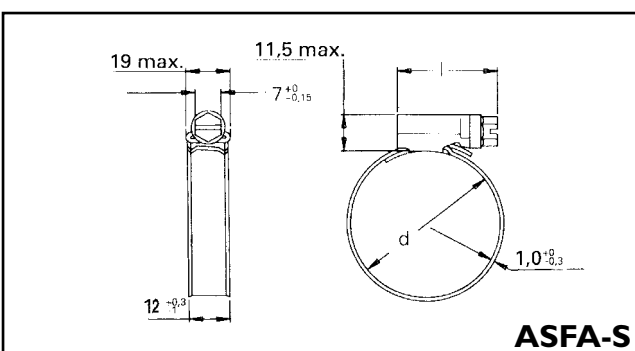
**Screw:** Stainless steel AISI-302 Cu.

**Band and housing:** Stainless steel X5CrNi 1810 (DIN 1.4301) (AISI-304).

## W5

**Screw:** Stainless steel AISI-316 Cu.

**Band and housing:** Stainless steel X5CrNiMo 17122 (DIN 1.4401) (AISI-316).



Source: Mikalor.