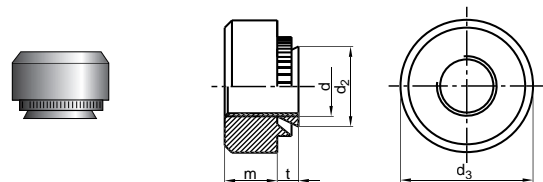


Pressure nut

General information:

The pressure nut is available in several different designs. It can be delivered in both steel and stainless materials.

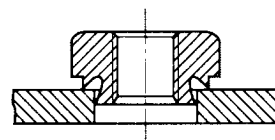


Field of application:

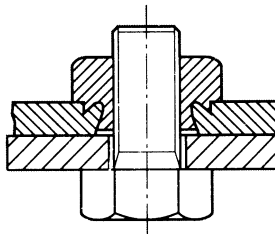
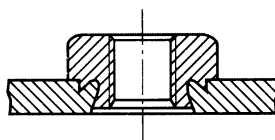
It is used in thin-walled materials, as for example steel, stainless steel, brass, copper and so on. Most of these pressure nuts give a plain bottom side.

Assembly instruction:

Centre the nut over the pre-pressed hole.



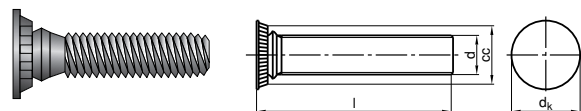
The nut is pressed in place between stamp and die.



Pressure screw

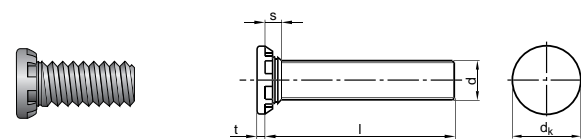
General information:

The pressure screw is available in several of different designs. It can be delivered in aluminium, steel and stainless materials.



Field of application:

It is used in thin-walled materials, as for example steel, stainless steel, brass, copper and so on. Most of these pressure nuts give a plain upper side.



Assembly instruction:

